

DESCRIPTION: —

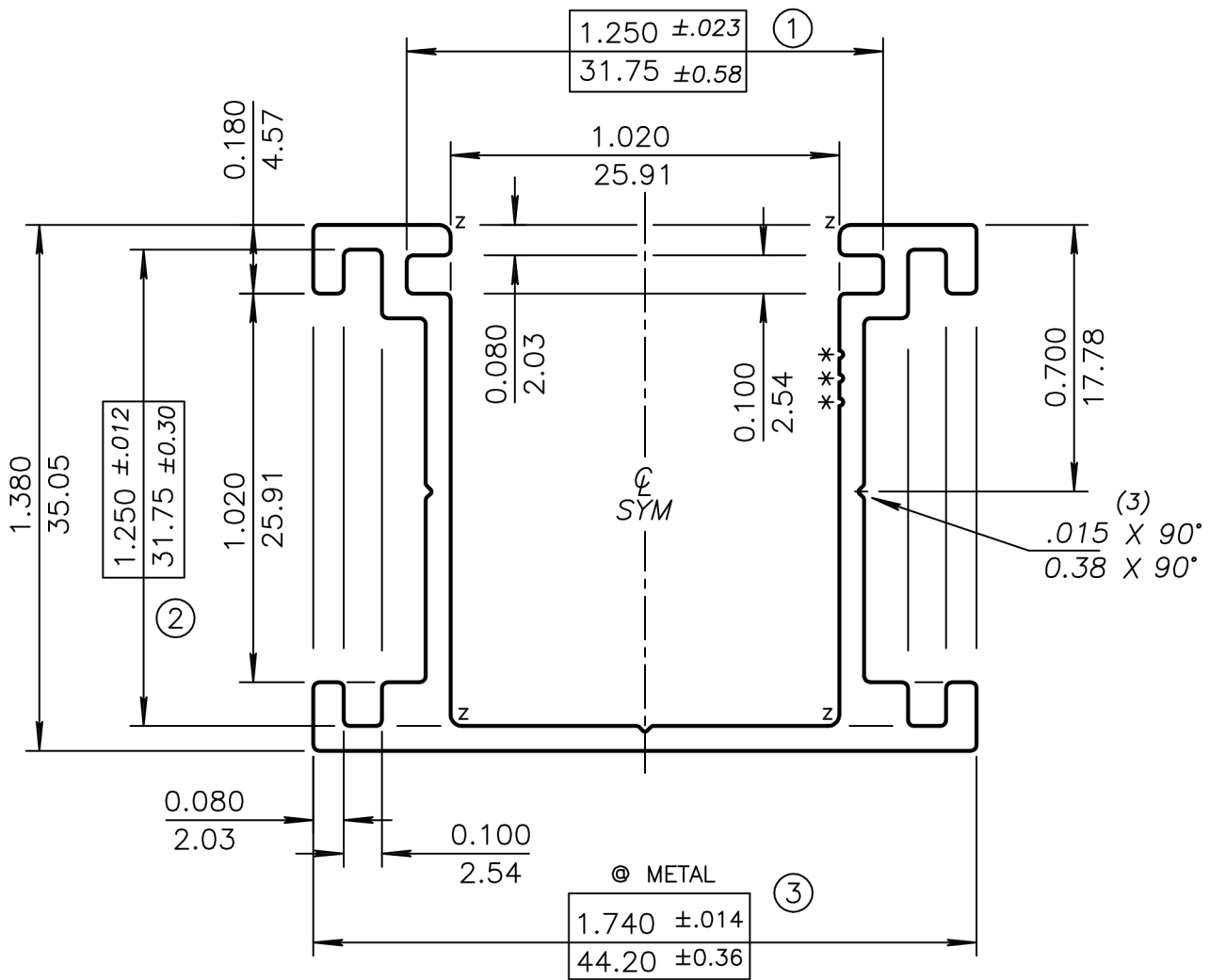
TARRIF# 7604.29.10.00

PROPOSAL# 37481-1C

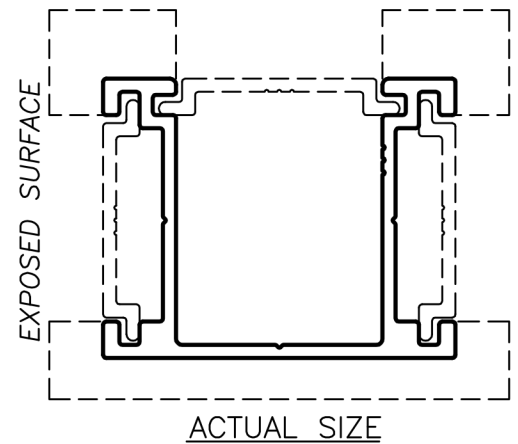
DATE

SYM

REVISION



NOTE:  
TO SLIDE-FIT WITH AS-77331



CUSTOMER'S SUPPLIED CAD FILE

UNMARKED RADII = RADIUS TO SUIT  
BREAK CORNERS = 0.016 (0.41) R.  
(z) = 0.030 (0.76) R. (4)

(\* ) = 0.010(0.25) R. X 0.010(0.25)D. HYDRO I.D. MARKS

**ARCHITECTURAL**  
FENCE & RAILINGS

UNSPECIFIED WALL THICKNESS

0.065(1.65)  
±0.006(0.15)

EST. AREA 0.402 IN<sup>2</sup> 260 MM<sup>2</sup> OUT PER. — IN — MM

EST. WT. 0.482 LBS/FT. 0.718 KG/M FACTOR 23

EST. PER. 11.199 IN 284 MM C.C.D. 2.208 IN 56 MM

DWN BY Sandra ALLOY 6063-T5 SCALE 2:1 DATE 12,02,2020

BREAK ALL CORNERS .016"R (0.41 mm)R UNLESS OTHERWISE NOTED.

STANDARD ALUMINUM ASSOCIATION TOLERANCES TO APPLY UNLESS OTHERWISE SPECIFIED